

Greg and Linda Hughey spend a lot of time outdoors, taking advantage of the magnificent woodland scenery at their log home above Washington's Lake Chelan. They like to linger in their covered hot tub or share meals and a glass of wine on their patio.

Home at Last

After many delays sidetrack a couple's log-home dream for years, a gem in the Cascades rises as a testament to perseverance and hope.

**story by Kim A. O'Connell | photography by Roger Wade
styling by Deborah Grahl | produced by Brenda Kelly**



For the better part of two decades, Greg and Linda Hughey knew they wanted a log home. They went to home shows, talked to developers and toured properties in scenic areas. But they also had three daughters to raise and a telecommunications business to run in Woodinville, Washington, located about 20 miles north of Seattle. So their dream home was postponed. Then, the unthinkable happened: Linda was diagnosed with breast cancer, and those plans were derailed again.

After Linda successfully beat the disease—"I'm five years clear," she says proudly—and their daughters were grown, the Hugheys were ready at last to build their second home. At a home show in Seattle, they saw a stunning photo of a property overlooking Lake Chelan, a scenic waterway in the mountainous North Cascades. They didn't quite believe that the property's lake view could be real until they ventured to the site, located at nearly 2,500 feet, to see it for themselves.

The view was, indeed, real, and the couple quickly purchased the property and sought out a log-home dealer, settling

on International Homes of Cedar (IHC), headquartered in their home town. The prime location made working with IHC president Rodney Robertson even easier, Greg says. Together, they customized one of the company's basic floor plans to maximize the site's spectacular panoramic vistas.

"They were initially looking at country ranch-style plans, but those weren't geared toward taking advantage of their expansive view," Rodney says.

The 2,480-square-foot house is built with interlocking flat-faced cedar logs. The two-story structure features a prow front, double banks of large windows and



an open floor plan that includes a great room, kitchen and dining room, all oriented toward the lake. The upstairs, accessed by a spacious landing that overlooks the great room, includes three bedrooms, each boasting a window that takes in the lake or the mountains.

The couple decorated the house to be rugged, plush and bold—marrying the comfort of country decor (without the clutter and heavy florals) with the rustic romance of log-home living (without going overboard with Western or outdoorsy items, Greg says). Sofas and chairs are upholstered in brown and red leather, and

iron bed frames, candle holders and other accents lend elegance. To complement the home's wood tones, the Hugheys incorporated painted drywall in select areas to differentiate spaces such as the kitchen and dining room.

"The Hugheys have a great design sense, and it's a better-looking home because of the architectural details and color," Rodney says. "I think it's one of our prettiest homes and certainly one of the best settings."

This month marks the three-year anniversary of the house's completion. The Hugheys are now "semi-retired" and make

the 150-mile journey from Woodinville as often as they can, usually staying for a week or two at a time. Someday, they'll live full time at Lake Chelan. "It's where we kick back," Linda says. "It's a private slice of heaven." 🏡

ABOVE: A plush red leather couch and a floral rug showcase the great room's marriage of country charm and understated elegance.

OPPOSITE: Although Greg and Linda wanted an open floor plan, the couple decided to use ceiling beams to differentiate between spaces. Here, the ceilings are even painted different colors to distinguish the space and provide more visual intrigue.





OPPOSITE: The spacious master bath showcases the tremendous mountain views.

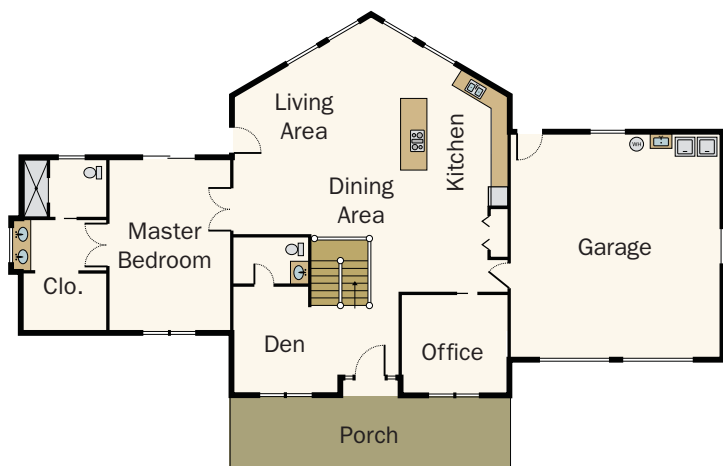
ABOVE: A sectional sofa and casual decor make for a cozy family room with a quiet view of the home's woodland setting.

LEFT: The master bedroom exudes warmth with rich hardwood flooring, soft lighting and comfortable armchairs for reading and reflection.

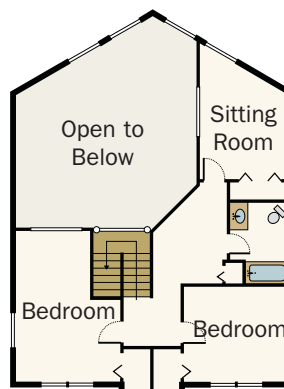




ABOVE: Even at their Lake Chelan retreat, the Hugheys must check in with their Woodinville, Washington-based business, so a two-sided desk is a smart and necessary addition to the space.



Main Level



Upper Level

home details

SQUARE FOOTAGE: 2,480

LOG COMPANY: INTERNATIONAL HOMES OF CEDAR

Reprinted with permission from *Log Home Living* April 2009. ©2009 Home Buyer Publications, Chantilly, Virginia, 800-826-3893.

design details



CLOCKWISE FROM TOP LEFT:

The design team's biggest task: take advantage of the views from every room; sturdy log posts and stone pavers highlight a welcoming front porch; cozy spaces throughout the 2,480-square-foot house offer sanctuaries for reading, dozing or taking in views of Lake Chelan; corner shelving serves as space saver in a guest bathroom.